



SESA

Support to EU External
and Security Actions

Protecting cultural heritage through satellite imagery

Roberta Onori

SESA Operations Team Leader
roberta.onori@satcen.europa.eu

Juan Escalante

SESA Project Manager
juan.escalante@satcen.europa.eu



PROGRAMME OF THE
EUROPEAN UNION



implemented by
SATCEN
EUROPEAN UNION SATELLITE CENTRE



Copernicus is the European Union's Earth observation programme.

The Copernicus Security Service is one part of the Copernicus Programme. It aims to support related European Union policies by providing information in response to the security challenges Europe is facing, namely improving crisis prevention, preparedness and response capacities in the following key areas:



- **Support to EU External and Security Actions** (implemented by the *European Union Satellite Centre, SatCen*);
- **Maritime surveillance** (implemented by the European Maritime Safety Agency, EMSA);
- **Border surveillance** (implemented by FRONTEX. The *European Union Satellite Centre, SatCen*, provides support via a SLA).





EC – SatCen Cooperation: A Legacy of more than 20 Years Empowering EU Strategic Autonomy





Scope of SESA

SESA is designed to support the European Union and its Member States by enhancing situational awareness needed by institutional stakeholders working in security-related domains.

The service delivers custom-designed geospatial products based on the analysis of satellite imagery and the information provided contributes to enhancing European capacities in crisis prevention, preparedness and response.

It also aims to assist in situations of crisis or emerging crisis and supports them in order to prevent global and trans-regional threats having a destabilising effect.



PROGRAMME OF THE
EUROPEAN UNION



IMPLEMENTED BY

SATCEN
EUROPEAN UNION SATELLITE CENTRE



The **Copernicus Security Service Component on Support to EU External and Security Actions (SESA)** is a European geospatial information service that assists the EU and its Member States in the framework of applicable Union policies and legislation along the following main policy groups, associated to key responsibilities across EU Institutions and Member States:





SESA Service Types

Copernicus SESA is divided into **three on-demand service types**. Each of them represents a different level of analysis in response to specific needs and phases of the decision-making process, i.e. planning, situational awareness.



The Geospatial Analysis service is used to confirm any information requested by the user.

The service provides up-to-date cartographic and thematic information.

The Support to Planning service is conceived to be used in the preparatory phase of a mission or event.



PROGRAMME OF THE
EUROPEAN UNION



IMPLEMENTED BY
SATCEN
EUROPEAN UNION SATELLITE CENTRE



SESA application areas



Environmental Compliance



Cultural Heritage



Humanitarian Aid



International Trade and Economic Diplomacy



Stability and Resilience for Development



Rule of Law



Security of EU Citizens



Transport Safety and Security



Climate Security



Crisis and Conflict



Health Security



PROGRAMME OF THE
EUROPEAN UNION

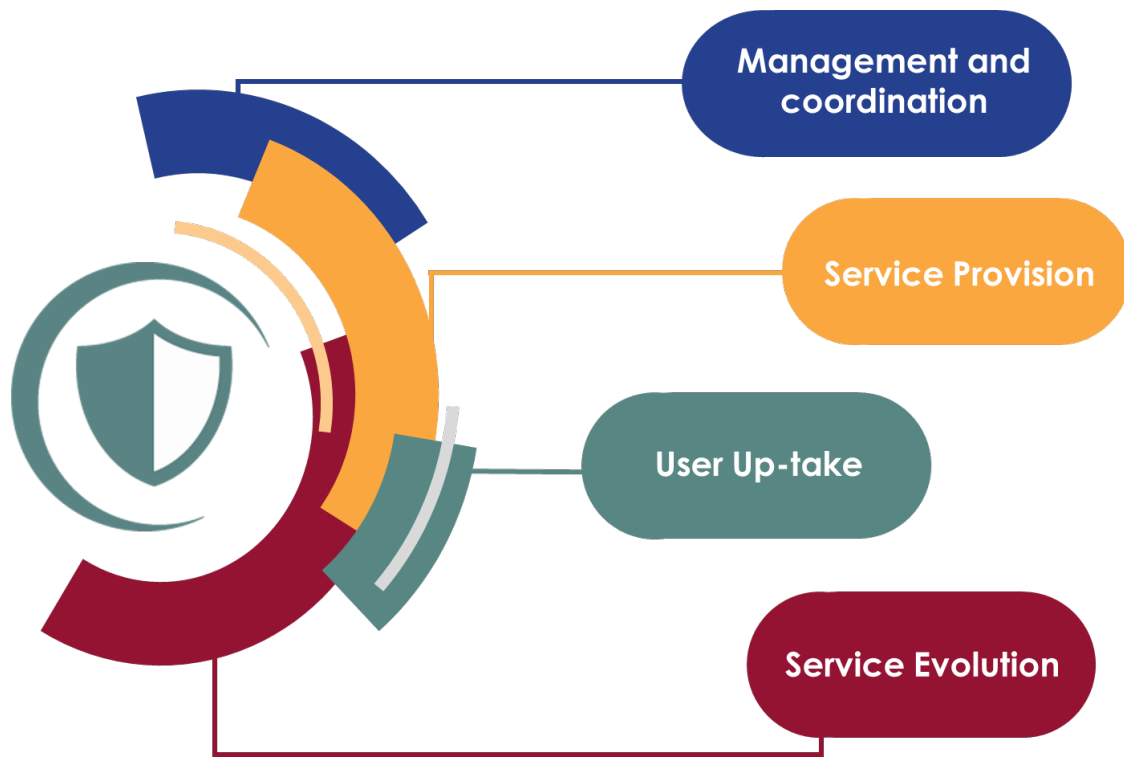


IMPLEMENTED BY

SATCEN
EUROPEAN UNION SATELLITE CENTRE



Copernicus SESA – Components



PROGRAMME OF THE
EUROPEAN UNION

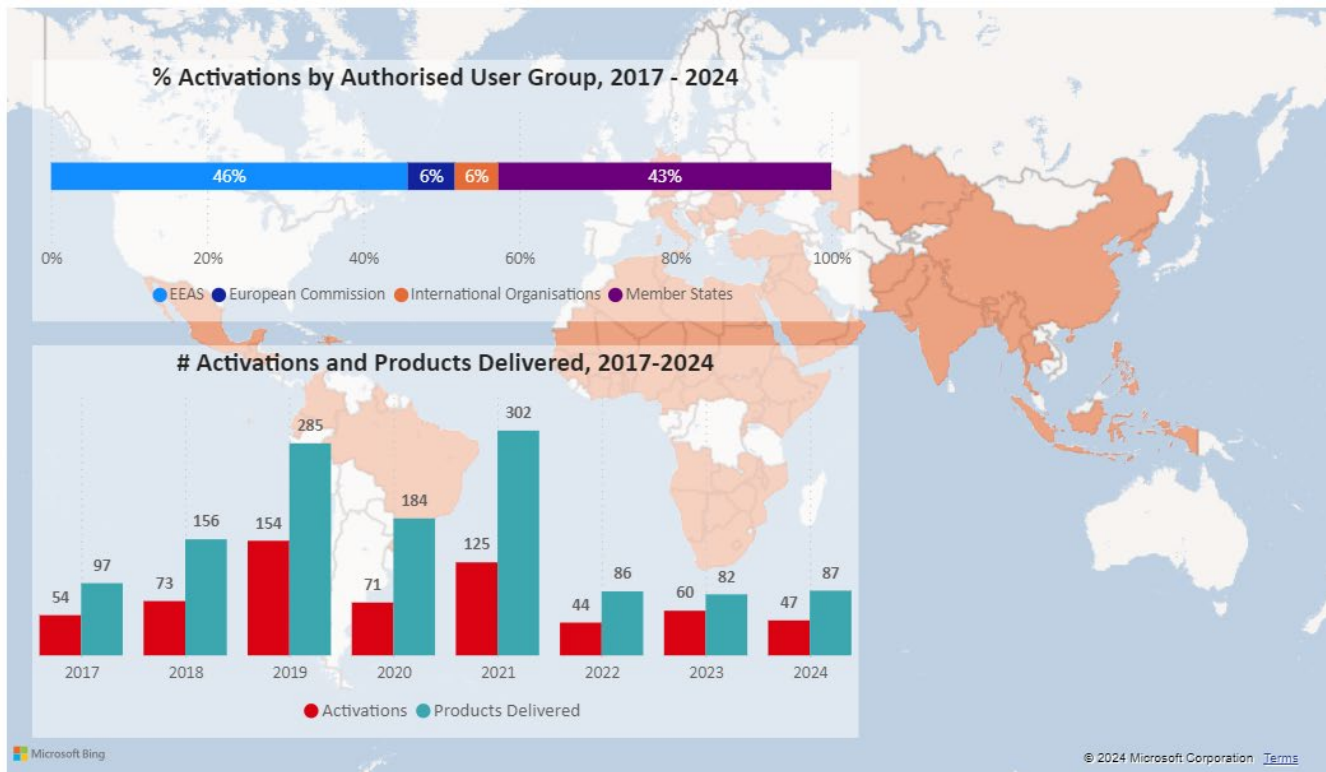


IMPLEMENTED BY

SATCEN
EUROPEAN UNION SATELLITE CENTRE



Copernicus SESA operations 2017 - 2024



2024

Users

41

Activations

628

Products

1,279

Countries

91



PROGRAMME OF THE
EUROPEAN UNION



IMPLEMENTED BY
SATCEN
EUROPEAN UNION SATELLITE CENTRE



Cultural Heritage – Actionable insights from Geo data



PROGRAMME OF THE
EUROPEAN UNION

Copernicus
Europe's eyes on Earth



IMPLEMENTED BY

SATCEN
EUROPEAN UNION SATELLITE CENTRE



Archaeological Crime from satellite



PROGRAMME OF THE
EUROPEAN UNION

Copernicus
Europe's eyes on Earth



IMPLEMENTED BY

SATCEN
EUROPEAN UNION SATELLITE CENTRE



Indicators of Archaeological Crime

- Illegal excavation and plundering of an archaeological site for gaining profit (selling)

Looting



- Destruction of a feature (vandalism, explosion, etc.)

Destruction



- Construction related activity, directly affecting the archaeological site

Construction



- Earth works directly affecting the site

Earth Movement



- Detection of possible archaeological site covered

Buried Heritage



- Defense position, suspicious vehicles, etc.

Other Activity



PROGRAMME OF THE
EUROPEAN UNION

Copernicus
Europe's eyes on Earth

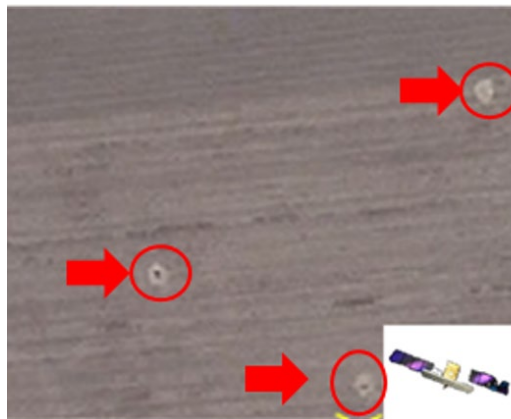
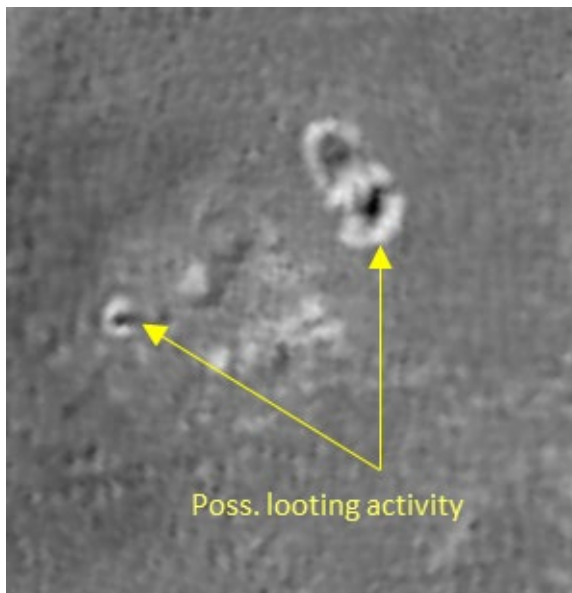
IMPLEMENTED BY
SATCEN
EUROPEAN UNION SATELLITE CENTRE



Looting



In archaeology and the cultural heritage sector, the term 'looting' refers to illegal excavations carried out by digging holes on a site of archaeological or historic significance in search of objects and antiquities to be sold in the black market.



A typical sign of looting on satellite imagery is the presence of numerous, amorphous, dark holes in the ground (usually with a diameter of 1-3 m), caused by manual digging.

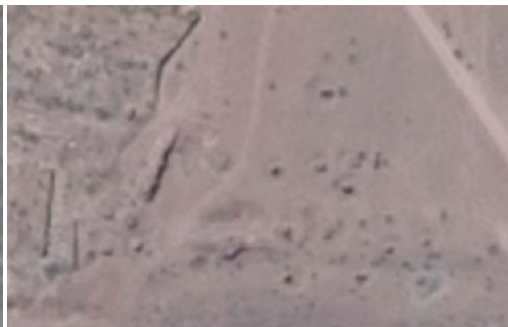
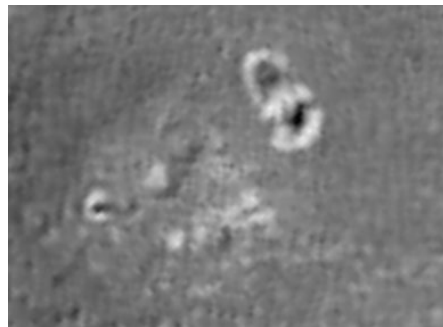
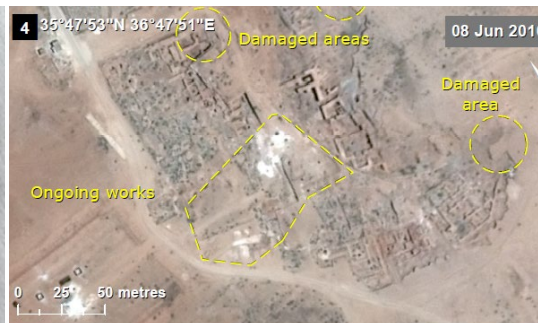
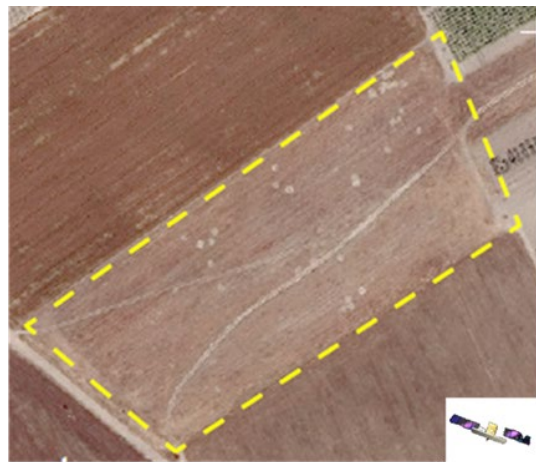


PROGRAMME OF THE
EUROPEAN UNION





Looting



PROGRAMME OF THE
EUROPEAN UNION

Copernicus
Europe's eyes on Earth

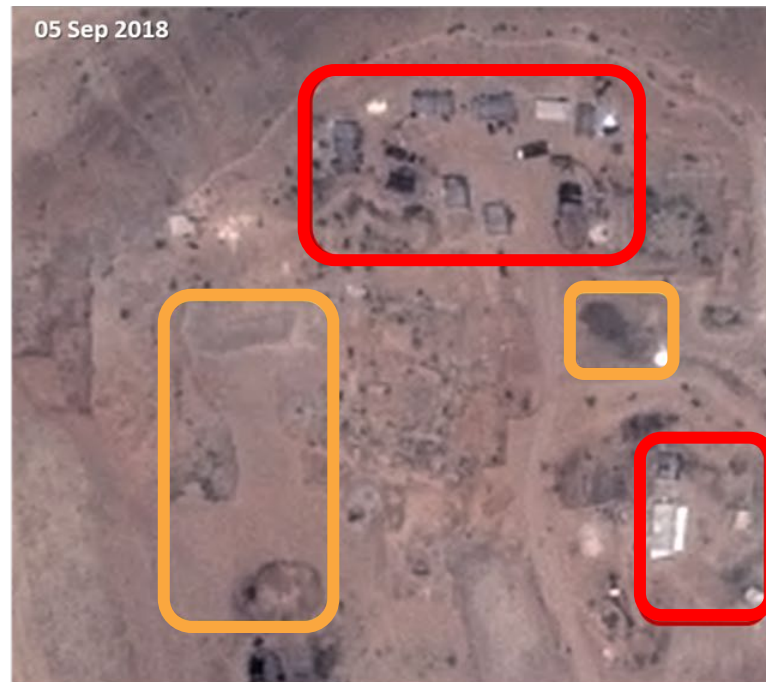
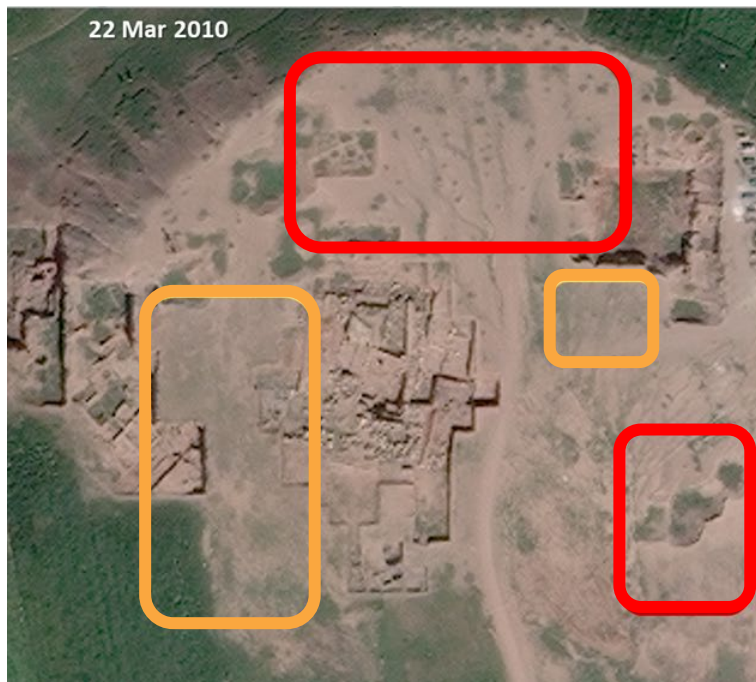
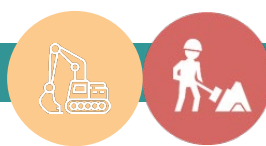


IMPLEMENTED BY

SATCEN
EUROPEAN UNION SATELLITE CENTRE



Earth Works



 Earth Movement

 Construction



PROGRAMME OF THE
EUROPEAN UNION

Copernicus
Europe's eyes on Earth

IMPLEMENTED BY
SATCEN
EUROPEAN UNION SATELLITE CENTRE



Destruction



PROGRAMME OF THE
EUROPEAN UNION

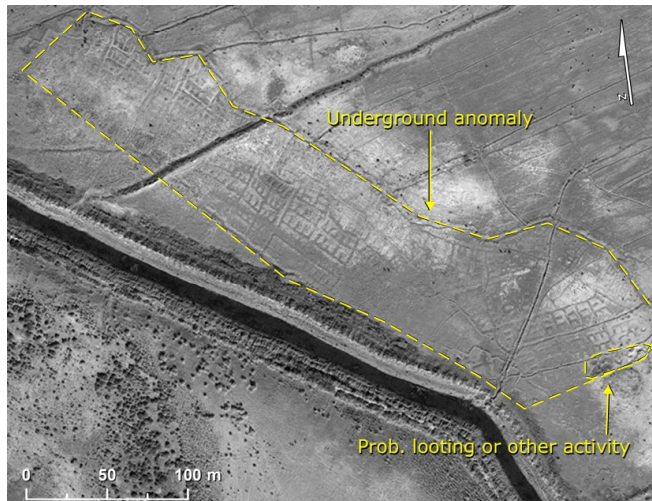
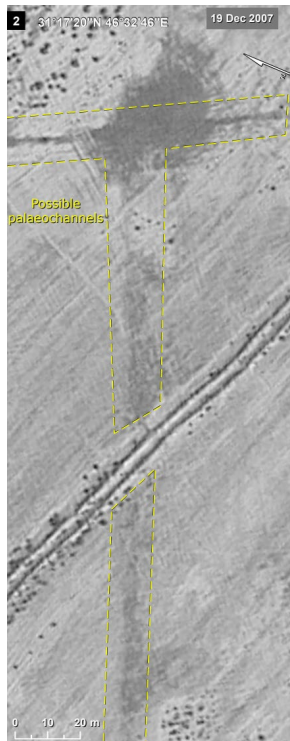
Copernicus
Europe's eyes on Earth



IMPLEMENTED BY
SATCEN
EUROPEAN UNION SATELLITE CENTRE



Buried Heritage



Poss. palaeochannels

Areas detected with spectral and morphologic differences i.e. height, tone, texture, pattern, shape, shadow, size

Underground Anomalies

Underground shapes (parallel streets and domestic architecture) poss. remnants of an ancient city

Erosion/ Salinity

Areas characterised by a large quantity of salts and soil degradation





Other Activity

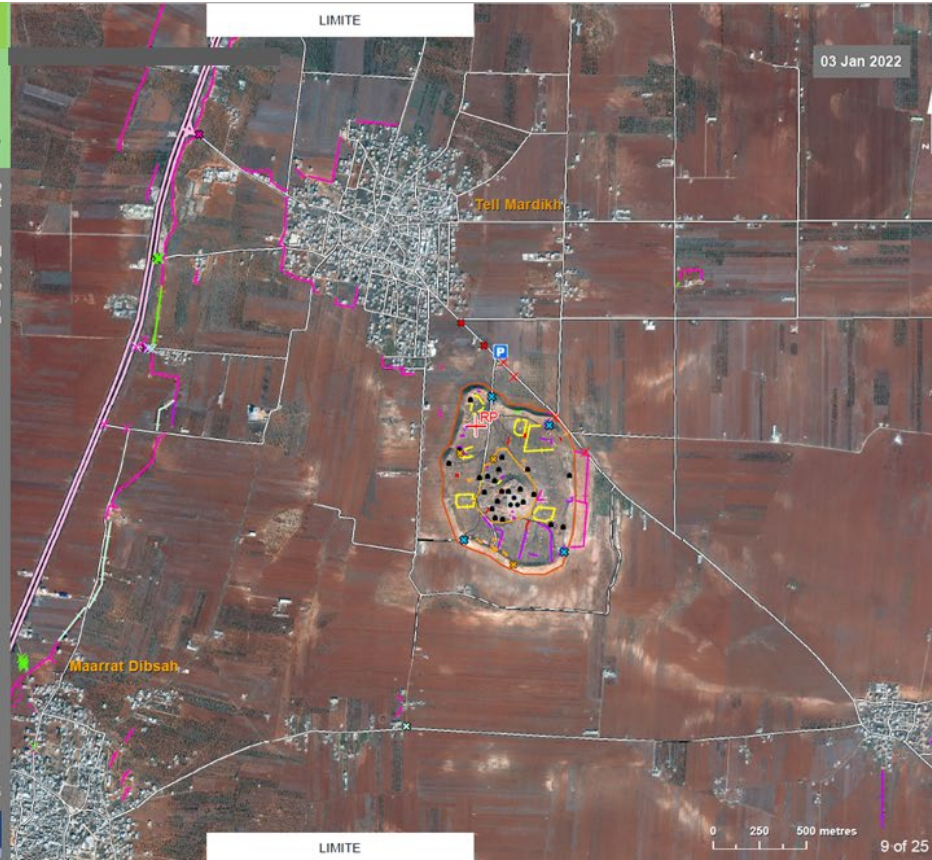
Ebla Syrian Arab Republic Defence Walls Overview

This page shows an overview of the area where defence walls were built over the 2011-2022 period.

While the highest level of activity and the largest amount of damage to the archaeological site took place in the 2011-2020 period, most of the walls in the surrounding area were built from 2020 onwards.

- Reference point
- Archaeological element
- New entrance
- Checkpoint
- Main entrance
- Checkpoint, 2020
- Checkpoint, 2021
- Checkpoint, 2022
- Roadblock, 2014-2017
- Roadblock, 2020
- Roadblock, 2021
- Roadblock, 2022
- Defence, 2014
- Defence, 2015
- Defence, 2016
- Defence, 2017
- Defence, 2018
- Defence, 2020
- Defence, 2021
- Defence, 2022
- Highway
- Local road, paved
- Local road, unpaved
- Acropolis
- Tell Mardikh

Copyright © European Union (2022). All Rights Reserved.
Copyright of original imagery remains with the provider. This product remains the property of the European Union.





Additional contribution and reporting

- Evaluation of damage evolution over a specific monitoring period (days, months, years)

Multitemporal analysis



- Analysis of the structural changes in the area, security analysis and planning of possible

Site Analysis



- Analysis of the results, identification of trend, most affected area

Analysis and statistics



PROGRAMME OF THE
EUROPEAN UNION

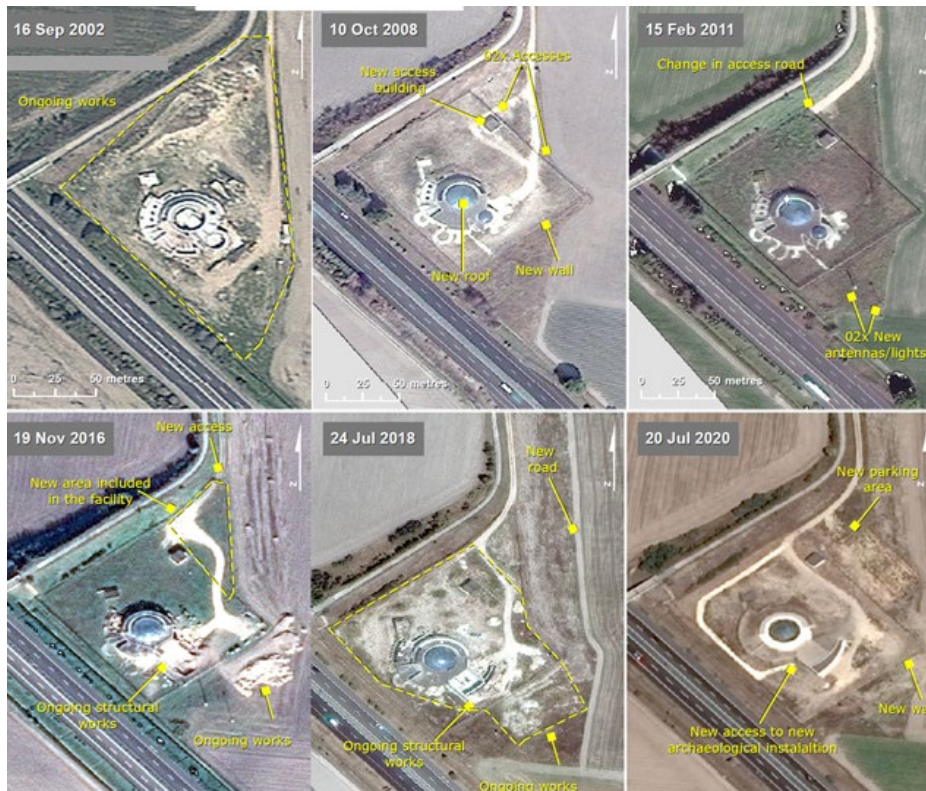


IMPLEMENTED BY

SATCEN
EUROPEAN UNION SATELLITE CENTRE



Site analysis



PROGRAMME OF THE
EUROPEAN UNION

Copernicus
Europe's eyes on Earth

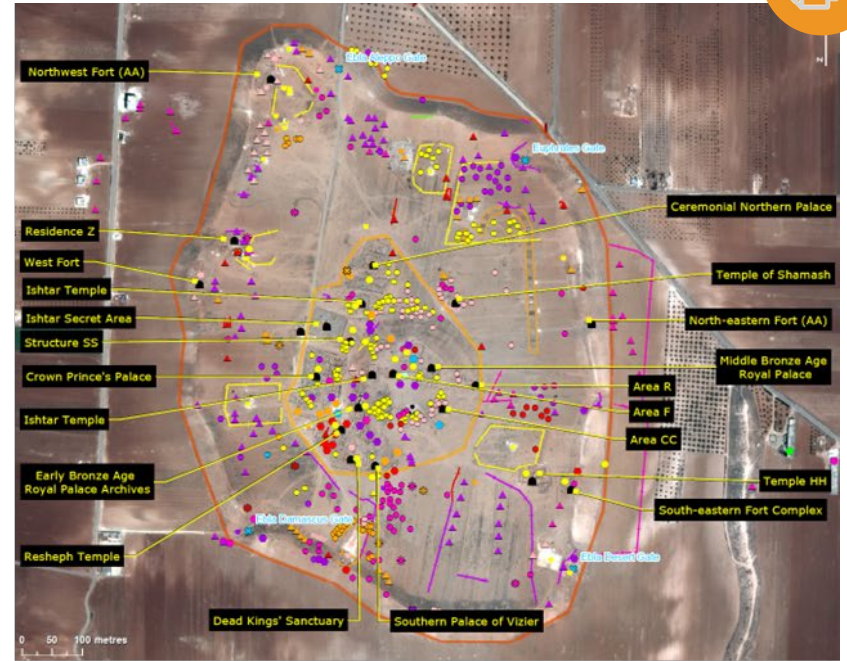
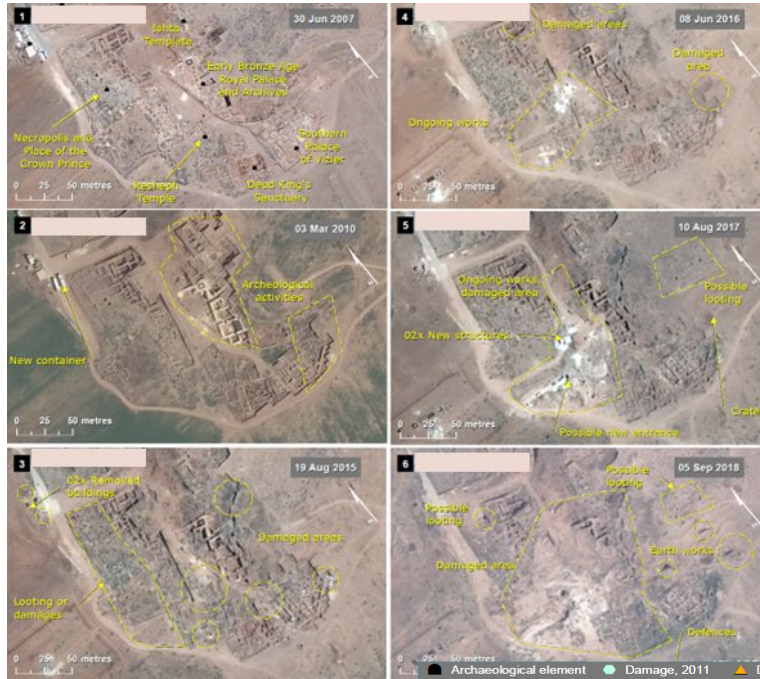


PROGRAMME OF THE
EUROPEAN UNION

Copernicus
Europe's eyes on Earth



Multitemporal analysis



● Archaeological element	● Damage, 2011	▲ Defence, 2016
⊗ Entrance, 2016	● Damage, 2012	▲ Defence, 2017
⊗ Entrance, 2018	● Damage, 2014	▲ Defence, 2018
● Ongoing works, 2014	● Damage, 2015	▲ Defence, 2020
● Ongoing works, 2015	● Damage, 2016	▲ Possible looting, 2012
● Ongoing works, 2016	● Damage, 2017	● Possible looting, 2014
● Ongoing works, 2018	● Damage, 2018	● Possible looting, 2015
● Ongoing works, 2020	● Damage, 2020	● Possible looting, 2016
● Crater, 2016	● Damage, 2021	● Possible looting, 2017
● Crater, 2017	▲ Defence, 2015	● Possible looting, 2018
● Crater, 2020	▲ Defence, 2015	● Possible looting, 2020
		— Defence, 2015
		— Defence, 2016
		— Defence, 2017
		— Defence, 2018
		— Defence, 2020
		— Defence, 2021
		— Roadblocks 2014-2017
		— Defence, 2016
		— Acropolis
		— Tell Mardikh



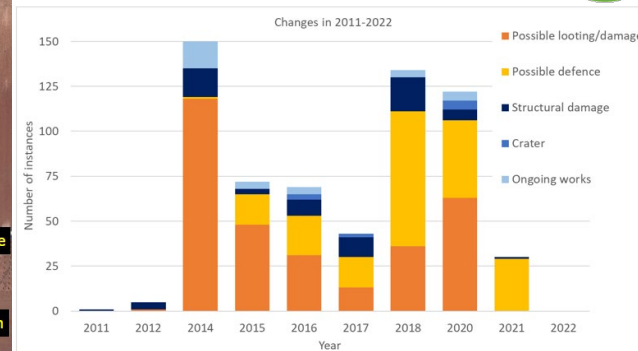
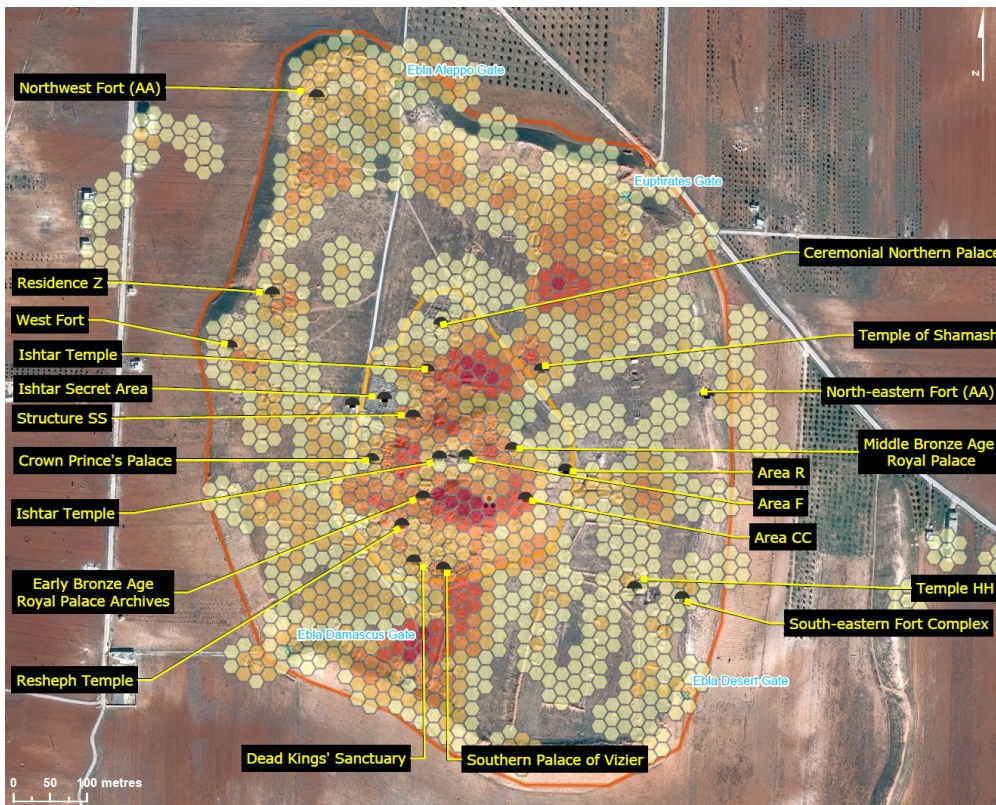
PROGRAMME OF THE
EUROPEAN UNION

Copernicus
Europe's eyes on Earth

IMPLEMENTED BY
SATCEN
EUROPEAN UNION SATELLITE CENTRE



Analysis and statistics



	Conflict Period											Total	Total
	2011	2012	2014	2015	2016	2017	2018	2020	2021	2022			
Possible looting/damage	0	1	118	48	31	13	36	63	0	0	310	310	
Possible defence	0	0	1	17	22	17	75	43	29	0	204	204	
Possible damage	Structural	1	4	16	3	9	11	19	6	1	0	70	
	Crater	0	0	0	0	3	2	0	5	0	10		
	Ongoing works	0	0	15	4	4	0	4	5	0	32		
Total Changes	1	5	150	72	69	43	134	122	30	0	626		

Legend

- Archaeological element (circle icon)
- Changes density (color scale):
 - Minimum (lightest green)
 - Low (light green)
 - Medium (medium green)
 - High (dark green)
 - Very high (darkest green)
- Main entrance (blue 'X' icon)
- Acropolis (orange square icon)
- Tell Mardikh (red square icon)



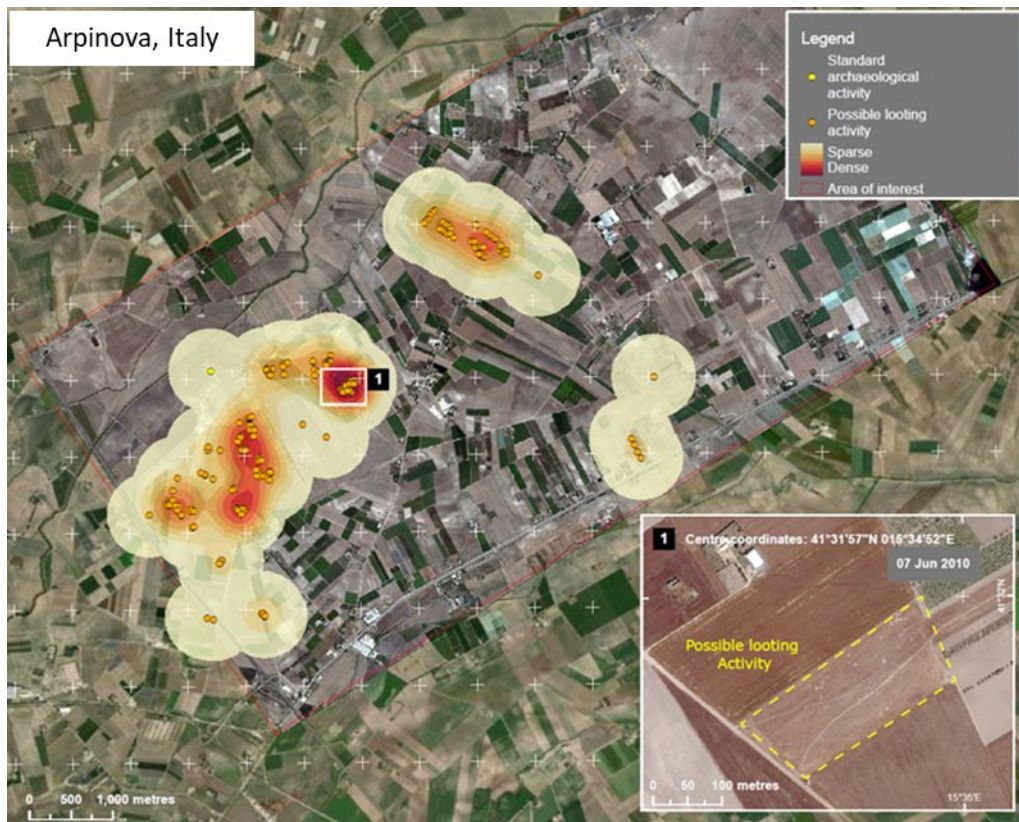
PROGRAMME OF THE EUROPEAN UNION



IMPLEMENTED BY



Analysis and Statistics



Suspicious Activity (No.)	Total	Assessment		
		Highly Likely	Likely	Plausible
Looting or agricultural/grazing activity	134	76	45	13
Looting or archaeological activity	69	63	4	2
Not related to looting activity	47	1	12	34
Standard archaeological activity	1	1	0	0
Total	251	141	61	49

Table 1: Suspicious activity detected in the analysed area.

	Total	Assessment		
		Highly Likely	Likely	Plausible
Looting or agricultural/grazing activity	134	76	45	13
Looting or archaeological activity	69	63	4	2
Possible looting activity (No.)	203	139	49	15

Table 2: Possible looting activity detected in the analysed area.

	Assessment of Looting Activity				Possible Archaeological Sites	
	Total	Highly Likely	Likely	Plausible	Total	Probable Archaeological Sites
16/09/2002	6	0	6	0	2	2
23/12/2005	4	0	0	4	2	0
08/10/2008	21	14	7	0	5	3
15/07/2009	22	19	3	0	1	2
07/06/2010	81	68	9	4	3	3
15/02/2011	34	14	16	4	3	2
21/03/2012	31	21	8	2	1	3
04/03/2013	0	0	0	0	1	0
20/06/2014	1	0	0	1	0	0
06/11/2015	3	3	0	0	4	0
19/11/2016	0	0	0	0	0	0
29/03/2017	0	0	0	0	0	0
24/07/2018	0	0	0	0	0	0
12/06/2019	0	0	0	0	0	0
20/07/2020	0	0	0	0	0	0
26/07/2020	0	0	0	0	0	0
Total	203	139	49	15	22	15

Table 3: Possible looting activity, possible and probable archaeological sites detected in the analysed area for each analysed image.





SESA

Support to EU External
and Security Actions

Thank you!

CopernicusSESA_Coordination@satcen.europa.eu



PROGRAMME OF THE
EUROPEAN UNION



implemented by
SATCEN
EUROPEAN UNION SATELLITE CENTRE